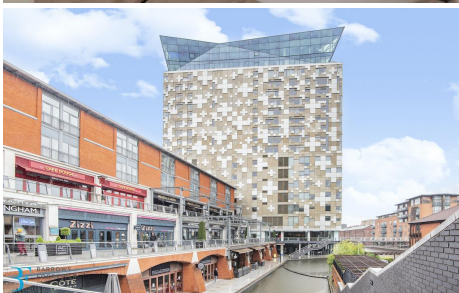


1 Bedroom Apartment for Rent - £900 per month

Wharfside Street, Birmingham, B1 1PQ



KEY FEATURES:

- STUNNING ONE BEDROOM APARTMENT
- ICONIC DEVELOPMENT
- CENTRAL LOCATION
- LARGE DOUBLE BEDROOM
- FURNISHED TO A VERY HIGH STANDARD
- CANAL SIDE DEVELOPMENT
- WALKING DISTANCE TO NEW STREET STATION
- CONCIERGE

Description

Barrows and Forrester are please to bring to the market this stunning upper floor one bedroom apartment in one of Birmingham's most iconic development - The Cube. The property comprises of a large double bedroom open plan living, high quality finish family bathroom and kitchen with fitted appliances. The property comes furnished to a very high standard with built in wardrobes as well as Laura Ashley sofas. The Cube benefits from lift access, security, concierge service and a range of restaurants bars and gyms all on your doorstep.

Location

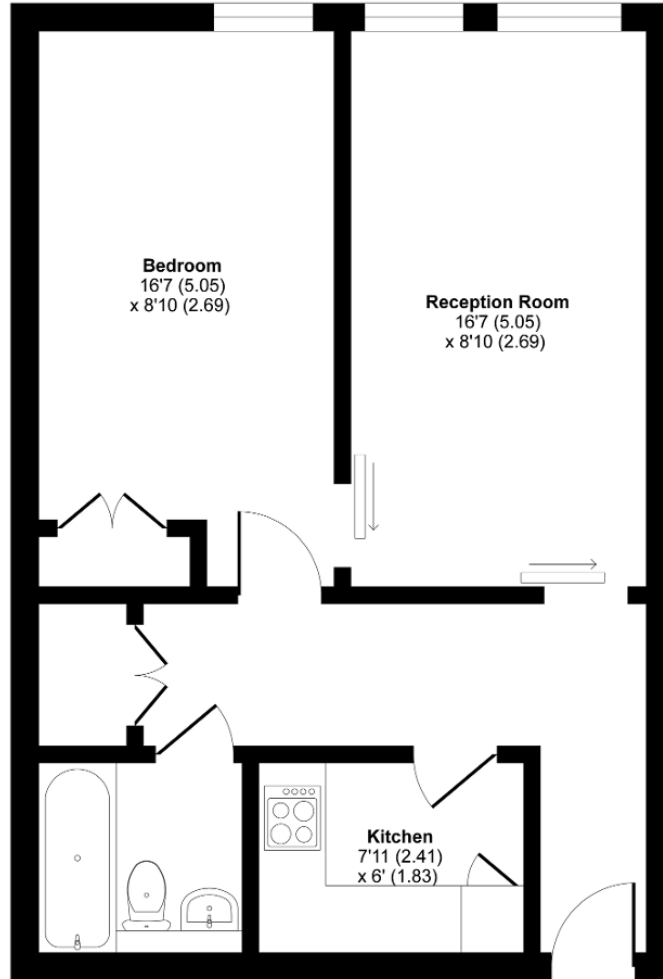
The Cube is located behind The Mailbox with easy access to Brindleyplace which is a 5 minutes' walk, the canals and Birmingham's New Street Station. Local amenities include two Tesco's, gym, restaurant and bars and local activities including a bowling venue.



The Cube West 197, Wharfside Street, Birmingham, B1

Approximate Area = 500 sq ft / 46.5 sq m

For identification only - Not to scale



SECOND FLOOR



Floor plan produced in accordance with RICS Property Measurement Standards incorporating International Property Measurement Standards (IPMS2 Residential). © nichecom 2020. Produced for Barrows and Forrester Property Group. REF: 614414



BARROWS FORRESTER
PROPERTY GROUP

Energy Efficiency Rating		Current	Potential
Very energy efficient - lower running costs	(92-100) A		
(81-91) B			
(69-80) C			
(55-68) D			
(39-54) E			
(21-38) F			
(1-20) G			
Not energy efficient - higher running costs			
England, Scotland & Wales		80	82
	EU Directive 2002/91/EC		

Environmental Impact (CO ₂) Rating		Current	Potential
Very environmentally friendly - lower CO ₂ emissions	(92-100) A		
(81-91) B			
(69-80) C			
(50-68) D			
(39-54) E			
(21-38) F			
(1-20) G			
Not environmentally friendly - higher CO ₂ emissions			
England, Scotland & Wales		84	85
	EU Directive 2002/91/EC		